

Govt. of India
Ministry of Human Resource Development
Dept. of School Education and Literacy
Mid Day Meal Division

PAB-MDM meeting
to consider and approve AWP&B 2018-19

(Date of the meeting: 18.05.2018)



APPRAISAL NOTE

State: Assam

INDEX

Sl. No.	CHAPTER	Page no.
Overview	Pre-requisite steps for submission of AWP&B	2-3
	Main Issues from Appraisal	
	Best practices	
Part-A	General Information	4
Part-B	Review of performance during 2017-18	5-15
Part-C	Recommendations of Appraisal team and quantification of variables for central assistance for 2018-19.	16-18
Part-D	Analysis sheet.	19 onwards

Overview:

Status on Pre requisite steps required for submission of AWP&B

Pre-requisite step	Status
Plan should be approved by SSMC Meeting	Yes
Release of funds through e-transfer from State / District to at least 50% schools	Yes
100% payment of cost of food grains made to FCI	No
100% payment of honorarium to cook-cum-helpers through e-transfer to their bank accounts.	Yes
Annual and Monthly data entry for the FY 2017-18 should be completed up to March 2018	Annual: 99% Monthly: 84%
Automated Monitoring system should have been operationalized	Not fully
Emergency Medical Plan on the lines of the contingency plan of Odisha.	Yes
Uploading of Plan through MDM-MIS	Yes
Action taken note on commitments given by the State Govt. during PAB Meeting of 2017-18	Yes
Action plan for the testing of food samples, Number of food samples tested by accredited labs and findings	No reputed lab in the State*
Separate and detailed MME plan	Yes
Plan submitted duly signed by the Pr. Secretary / Secretary of the State/UT within the scheduled date.	Yes

* Meals provided only by Centralized kitchen are tested in reputed laboratory in Kolkata.

Issues:

1. Decline in enrolment and coverage of children under primary.
2. Slow progress in construction of kitchen-cum-stores (5122 i.e. 9% yet to start).
3. Huge pendency (Rs. 9.94 crore) of FCI bills as per FCI statement.
4. Use of firewood as mode of cooking in 75% schools.
5. Non-coverage of children under MDMS in NCLP schools of Nagaon district.
6. Less utilization of MME (59%).
7. Mismatch (10%) in utilization of food grains (85%) and cooking cost (95%).
8. Mismatch in data reported through MIS and AWP&B.

Best Practices:

1. Provision of MDM calendar to schools and offices of Education Department with the information like suggested menu, calorie chart, norms with respect to all components, toll free number.
2. “Sampriti Bhojan” for providing supplementary nutritive items/ foods like sweet, fruits, snacks and biscuits etc. to the children in addition to MDM with voluntary support from the community.
3. The State has installed multi-tap facilities in schools for group hand-washing.
4. State has promoted Kitchen Garden in 49994 schools with the help School Management Committees.
5. Guidelines on food safety and hygiene for kitchens under MDMS have been translated into local languages and distributed to the schools.

Part-A : General Information

Introduction:

In Assam, National Programme of Nutritional Support to Primary Education (Known as Mid-Day Meal Scheme) was started w.e.f. January, 2005 covering school-going children of Class I to VIII in Government, Provincialized & Government aided LP, UP, Composite High & Higher secondary schools, Special Training Centres (RSTC & NRSTC) as well as Madrassa/Maqtab covered under Sarva Shiksha Abhiyan and schools under National Child Labour Project (NCLP), run by the Labour Department. This programme has not only given an opportunity to the children of different strata to have nutritious food in schools together but also enhanced enrolment, retention as well as academic achievement. The State Govt. has transferred the implementation of Mid-Day Meal Scheme from Director, Elementary Education, Assam to SSA, Assam w.e.f. 01-01-2014. The scheme of Mid-Day Meal has now been running under the direct supervision of SSA, Assam w.e.f. 01-01-2014.

1. Basic Information:

(Year 2017-18)

S. No.	INDICATORS	STATUS		
1. No. of Institutions		PRY	U PRY	TOTAL
i)	Existing Institutions	43464	13776	57240
ii)	Covered during the year	43338	13754	57092
2. No. of Children				
i)	Approved by MDM-PAB	2906204	1349967	4256171
ii)	Enrollment as on 30.9.2017	2803941	1468335	4272276
ii)	Average No. of children availed MDM during 01.04.2017 to 31.03.2018	2721088	1332485	4053573
3. Coverage of children as per Quarterly Progress Report (QPR)				
i)	Average no. of children availed MDM as per QPR-1	2753190	1332958	4086148
ii)	Average no. of children availed MDM as per QPR-2	2710811	1329117	4039928
iii)	Average no. of children availed MDM as per QPR-3	2696262	1329379	4025641
iv)	Average no. of children availed MDM as per QPR-4	2724089	1338485	4062574
4. No. of Working Days				
i)	Approved for 4 quarters	210	220	
ii)	Covered during 4 quarters	220	220	
5. Per unit cooking cost Per child per day (in Rs.)				
AVERAGE UNIT COOKING COST PCPD		4.13	6.18	
State's contributions in cooking cost per child per day		0.41	0.62	

**percentage to enrollment.*

Part-B : Review of Performance in 2017-18 (01.04.17 to 31.03.2018)

2. Based on the information provided by the State administration in its AWP&B 2018-19, the performance during 2017-18 (01.04.17 to 31.03.2018) was reviewed. The major issues in implementation during 2017-18 are summarized as under: -

2.0 Coverage of Institutions

Coverage in terms of no. of institutions.

Difference between Existing Vs No. of institutions covered (Achievement) –

i) PRIMARY

The number of existing institutions	= 43464
Number of institutions covered during 01.04.17 to 31.03.18	= 43338 (99.7%)

ii) UPPER PRIMARY

The number of existing institutions	= 13776
Number of institutions covered during 01.04.17 to 31.03.18	= 13754 (99.8%)

2.1 Coverage of Children

2.1.1 Coverage against enrolment :

a) Primary - Coverage in terms of No. of children. Difference between Enrolment vs. Average No. of Children Aailed MDM (Achievement) (Refer Table 2.5 of the Analysis Sheet).

Total Enrolment as on 30.09.2017	= 2803941
Average number of children aailed MDM during 01.04.17 to 31.03.18	= 2721088 (97%)

The coverage at State level is well above the national average of 75%.

b) Upper Primary: Coverage in terms of No. of children. Difference between Enrolment vs. Average No. of Children Aailed MDM (Achievement) – (Refer Table 2.6 of the Analysis Sheet).

Total Enrolment as on 30.09.2017	= 1468335
Average number of children aailed MDM during 01.04.17 to 31.03.18	= 1332485 (91%)

Coverage of children at upper primary level in the State is well above the national average of 75%.

2.1.2 Coverage against PAB-MDM approval :

a) Primary : Coverage in terms of No. of children. Difference between PAB Approval (Target) vs. Average No. of Children Availing MDM (Achievement)
(Refer Table 2.3 of the Analysis Sheet).

The number of children approved by MDM PAB for 2017-18 = 2911309
Average number of children availed MDM during 01.04.17 to 31.03.18 = 2721088 (94%)

b) Upper Primary: Coverage in terms of No. of children. Difference between PAB Approval (Target) Vs Average No. of Children Availing MDM (Achievement)
(Refer Table 2.4 of the Analysis Sheet).

The number of children approved by MDM PAB for 2017-18 = 1349967
Average number of children availed MDM during 01.04.17 to 31.03.18 = 1332485 (99%)

2.1.3 No. of Meals: Difference between No. of meal to be served (Target) Vs. No. of meals Served (Achievement) - PY+U PY (Refer Table 2.7 & 2.8 of the Analysis Sheet).

The number of meals to be served during 01.04.17 to 31.03.18 = **60.87 Crore**
The number of meals served during 01.04.17 to 31.03.18 = **57.08 Crore (94%)**

2.2 FOODGRAINS (PRIMARY + UPPER PRIMARY)

2.2.1 Level of Opening Balance as on 01.04.17: (Refer Table 3.2 of the Analysis Sheet).

The State had 1050.14 MTs opening balance against the total allocation of 105764.31 MTs for 2017-18 as on 1.4.17 which is only 1%.

2.2.2 Level of unspent balance as on 31.03.18: (Refer Table 3.3 of the Analysis Sheet).

The State level closing balance as on 31.03.18 is 2229.48 MTs (2%) against the allocation.

2.2.3 Availability of Food grains: (01.04.17 to 31.03.18) : (Refer Table 3.5 of the Analysis sheet)

State level availability as on 31.03.18 was 87% of the total allocation.

2.2.4 Utilization of food grains: (Refer Table 3.7 of the Analysis sheet)

An analysis of the utilization of food grains during 2017-18 shows that State has utilized 85% of the allocated food grains.

2.2.5 Payment of cost of foodgrains to FCI: (Refer Table 3.9 of the Analysis sheet)

As per information provided by the State Govt., the FCI has submitted bills for Rs. 2737.77 lakhs during 1.4.2017 to 31.03.2018 towards cost of food grains. As per information provided by the State Government, State has made payment for Rs. 2737.77 lakhs (100%) to the FCI. However as per FCI, there is a pendency of Rs. 994 lakhs.

2.3 COOKING COST (PRIMARY + UPPER PRIMARY)

2.3.1 Level of Opening balance as on 01.04.17: (Refer Table 4.2.1 of the Analysis Sheet)

The State had reported opening balance of Rs. 1652.92 lakhs (4%) at the beginning of the financial year against allocation of Rs. 43635.77 lakhs.

2.3.2 Level of closing balance as on 31.03.18: (Refer Table 4.2.2 of the Analysis Sheet)

The State had closing balance of Rs. 2264.56 lakhs (5% of allocation) towards cooking cost as on 31.03.18.

2.3.3 Utilization of Cooking cost: (Refer Table 4.5 & 4.6 of the Analysis Sheet)

State level utilization is only Rs. 41358.77 lakhs (95%) against the allocation.

2.4 Reconciliation of utilisation and performance during 2017-18 (1.4.17 to 31.03.18)

2.4.1 Mismatch in utilization of Food grains vis-à-vis cooking cost: (Refer Table – 5.1 of Analysis Sheet)

Ideally the percentage utilization of cooking cost and food grains should tally with each other. The data furnished in the AWP&B reveals that there is a huge mismatch of 10% at State level in utilization of cooking cost (95%) and food grains (85%).

2.5 Cook-Cum-Helper (PRIMARY + UPPER PRIMARY):

MDM-PAB had approved 122724 cook-cum-helpers to be engaged during 2017-18, the State has engaged 118998 (97%) cook-cum-helpers. The State has proposed to engage 118998 cook-cum-helpers during 2018-19. The State has utilized 96% of the allocated funds for payment of honorarium to cook cum helpers. (Refer Table – 6.2 of Analysis Sheet).

2.6 Utilization of MME (Refer Table – 7.2 & 7.3 of Analysis Sheet)

Against the allocation of Rs. 988.94 lakhs as Central Assistance towards MME funds, the State has utilized only Rs. 583.84 lakh (59%).

2.7 Utilization of Transportation Assistance (Refer Table – 8.2 & 8.3 of Analysis Sheet)

Against the allocation of Rs. 1438.40 lakhs towards Central Assistance towards funds for Transportation Assistance the State has utilized Rs. 1245.57 lakhs (87%) only.

2.8 Construction of Kitchen-cum-stores (Reference Table -9.1.2 of Analysis Sheet)

Central assistance of Rs. 46885.32 lakhs has been released for construction of 56795 Kitchen-cum-Stores. Out of 56795 kitchen-cum-stores sanctioned till 2017-18, 50981 (90%) Kitchen-cum-stores have been constructed. Construction work is in progress for 692 (1%) kitchen-cum-stores. However construction has still not started in 5122 (9%) kitchen-cum-stores.

2.9 Procurement of Kitchen devices (Reference Table -9.2.2 of Analysis sheet)

Central assistance of Rs. 3683.03 lakhs has been released towards procurement of 73661 (62267 new + 11394 replacement) units of kitchen devices during 2006-07 to 2017-18. The State has completed procurement of all units.

3. Data Entry Status on the MIS Web Portal

For smooth functioning of MDMS, Ministry of HRD, MDM Division has developed web based monitoring system i.e. MDM-MIS in collaboration with NIC. In this web portal State/District/Block users have to make Annual and Monthly data entry. The State should monitor that the data is entered in timely manner by District/Block users into the portal. The Annual and monthly data entry status of the State are given below:-

3.1 Annual Data Entry:

State has completed annual data entry for 99% schools for the year 2017-18. The district wise annual data entry status is given below:-

FY-2017-18					
Annual Data Entry Status_ASSAM					
S. No.	District	Total Schools	Completed(Saved)	Pending	% Completed
1	BAKSA	2203	2203	0	100%
2	BARPETA	2961	2899	62	98%
3	BONGAIGAON	1238	1238	0	100%
4	CACHAR	2642	2642	0	100%
5	CHIRANG	1167	1167	0	100%
6	DARRANG	1443	1443	0	100%
7	DHEMAJI	1931	1931	0	100%
8	DHUBRI	3548	3548	0	100%
9	DIBRUGARH	1991	1991	0	100%
10	DIMA HASAO	950	943	7	99%
11	GOALPARA	2066	2026	40	98%
12	GOLAGHAT	1827	1675	152	92%
13	HAILAKANDI	1820	1820	0	100%
14	JORHAT	2375	2375	0	100%
15	KAMRUP	2795	2795	0	100%
16	KAMRUP - M	800	800	0	100%
17	KARBI ANGLONG	2258	2243	15	99%
18	KARIMGANJ	2037	2037	0	100%
19	KOKRAJHAR	2414	2414	0	100%
20	LAKHIMPUR	2854	2854	0	100%
21	MARIGAON	1683	1683	0	100%
22	NAGAON	3856	3836	20	99%
23	NALBARI	1457	1043	414	72%
24	SIBSAGAR	2448	2448	0	100%
25	SONITPUR	2648	2648	0	100%
26	TINSUKIA	1519	1519	0	100%
27	UDALGURI	1581	1581	0	100%
	Total	56512	55802	710	99%
Source: www.trgmdm.nic.in as on 10 May'18 till 15:57 hrs					

3.2 Monthly data entry

Average monthly data entry status up to March, 2018 at State level is 84%. The details of district wise monthly data entry status are placed below:

FY 2017-18															
Monthly Data Entry Status_ASSAM															
S. No.	District	Total Schools	% April	% May	% June	% July	% Aug	% Sept	% Oct	% Nov	%Dec	Jan%	Feb %	Mar %	Average %
1	BAKSA	2203	100%	100%	100%	100%	100%	100%	100%	100%	100%	100%	100%	100%	100%
2	BARPETA	2961	80%	80%	79%	79%	78%	78%	77%	76%	71%	14%	13%	10%	61%
3	BONGAIGAON	1238	100%	100%	100%	100%	100%	100%	100%	100%	100%	44%	40%	32%	85%
4	CACHAR	2642	100%	100%	100%	100%	100%	100%	100%	99%	97%	85%	81%	75%	95%
5	CHIRANG	1167	95%	95%	95%	95%	95%	94%	94%	94%	94%	42%	41%	41%	81%
6	DARRANG	1443	100%	100%	100%	100%	100%	100%	100%	100%	100%	100%	100%	100%	100%
7	DHEMAJI	1931	99%	99%	99%	99%	97%	94%	91%	66%	21%	12%	0%	0%	65%
8	DHUBRI	3548	100%	100%	100%	100%	100%	100%	100%	100%	100%	100%	100%	100%	100%
9	DIBRUGARH	1991	99%	99%	98%	98%	98%	98%	97%	93%	70%	42%	35%	23%	79%
10	DIMA HASAO	950	95%	95%	95%	95%	95%	95%	95%	95%	95%	72%	68%	68%	89%
11	GOALPARA	2066	90%	90%	90%	89%	88%	88%	86%	79%	58%	51%	49%	47%	75%
12	GOLAGHAT	1827	86%	85%	83%	81%	78%	77%	75%	72%	66%	56%	52%	42%	71%
13	HAILAKANDI	1820	100%	100%	100%	100%	100%	100%	100%	100%	100%	100%	100%	100%	100%
14	JORHAT	2375	91%	91%	90%	89%	88%	87%	87%	85%	73%	60%	55%	37%	78%
15	KAMRUP	2795	99%	99%	99%	99%	99%	99%	99%	99%	98%	98%	97%	97%	99%
16	KAMRUP - M	800	100%	100%	100%	100%	100%	100%	100%	100%	100%	100%	100%	100%	100%
17	KARBI ANGLONG	2258	98%	98%	98%	98%	98%	98%	98%	92%	83%	1%	1%	1%	72%
18	KARIMGANJ	2037	99%	99%	99%	99%	99%	99%	99%	99%	99%	99%	99%	99%	99%
19	KOKRAJHAR	2414	94%	94%	93%	92%	92%	91%	90%	89%	87%	57%	49%	42%	81%
20	LAKHIMPUR	2854	98%	98%	98%	94%	92%	87%	86%	81%	79%	45%	41%	30%	77%
21	MARIGAOON	1683	100%	100%	100%	100%	100%	100%	100%	100%	100%	69%	65%	59%	91%
22	NAGAON	3856	98%	98%	98%	98%	98%	97%	97%	95%	88%	72%	67%	58%	89%
23	NALBARI	1457	70%	69%	69%	69%	68%	67%	67%	65%	57%	33%	29%	26%	57%
24	SIBSAGAR	2448	62%	62%	62%	62%	62%	62%	62%	62%	61%	61%	61%	61%	61%
25	SONITPUR	2648	96%	96%	96%	96%	96%	96%	96%	96%	88%	72%	52%	46%	85%
26	TINSUKIA	1519	99%	99%	98%	98%	98%	97%	97%	92%	65%	61%	51%	42%	83%
27	UDALGURI	1581	100%	100%	100%	100%	100%	100%	100%	100%	100%	100%	100%	100%	100%
	Total	56512	94%	94%	94%	94%	93%	92%	92%	90%	83%	64%	61%	56%	84%

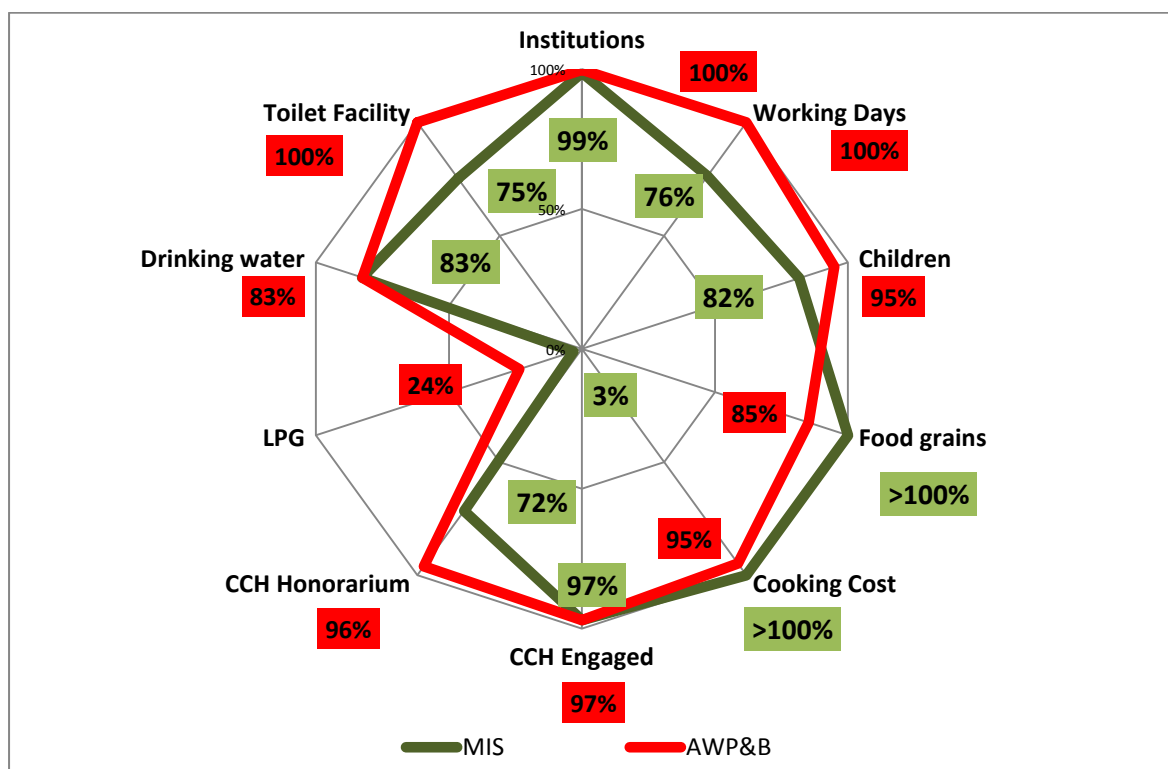
Source: www.trgmdm.nic.in

as on 10 May'18 till 16:08 hrs

3.3 Mismatch in Data from MIS and AWP&B

COMPONENT	MIS	AWP&B
Institutions	56512	57092
Working Days	164	215
Children	3493650	4053573
Food grains (In MTs)	137278.64	90079.13
Cooking Cost (Rs. In lakhs)	118658.80	41358.77
CCH Engaged	118992	118998
CCH Honorarium (Rs. In lakhs)	8782.37	11786.46
LPG	1852	13474
Drinking water	47275	47239
Toilet Facility	43115	57240

The graphical representation of the differences in data from MDM-MIS and as submitted by the State through Annual Work Plan & Budget is given below:



The State should take appropriate measures to reconcile the data of mismatching parameters.

3.4 Automated Monitoring System

Dictrict wise Meals Served on : 09 May'2018 Assam								
S.No.	District	Total Schools	Reported Schools	% Reported Schools	Total Enrolment	Reported Schools Enrolment	Meals Served	Meals Served Percentage
1	BAKSA	2070	320	15%	120712	18857	15535	82.38%
2	BARPETA	2904	55	2%	264818	5854	4141	70.74%
3	BONGAIGAON	1289	6	0%	122992	431	357	82.83%
4	CACHAR	2709	503	19%	245978	52139	40481	77.64%
5	CHIRANG	1164	142	12%	84818	12001	9045	75.37%
6	DARRANG	1464	181	12%	143554	20544	18308	89.12%
7	DHEMAJI	1882	1166	62%	112133	69123	57551	83.26%
8	DHUBRI	3512	377	11%	378802	40664	31996	78.68%
9	DIBRUGARH	2003	1094	55%	150949	89094	65902	73.97%
10	DIMA HASAO	981	47	5%	26774	1752	1054	60.16%
11	GOALPARA	2113	759	36%	178017	70662	56426	79.85%
12	GOLAGHAT	1835	946	52%	128588	65399	53306	81.51%
13	HAILAKANDI	2059	977	47%	110085	59836	48298	80.72%
14	JORHAT	2532	746	29%	124688	36917	29095	78.81%
15	KAMRUP-METRO	802	19	2%	87616	3411	2496	73.18%
16	KAMRUP-RURAL	2784	29	1%	192202	2135	1807	84.64%
17	KARIMGANJ	2243	270	12%	212059	29923	24018	80.27%
18	KOKRAJHAR	2312	745	32%	144765	55394	44366	80.09%
19	LAKHIMPUR	2961	810	27%	176302	52614	44337	84.27%
20	MORIGAON	1695	747	44%	160545	76158	66194	86.92%
21	NAGAON	3835	1647	43%	462003	201665	160792	79.73%
22	SIBSAGAR	2461	359	15%	131003	24404	20295	83.16%
23	SONITPUR	2770	1296	47%	275147	148829	115136	77.36%
24	UDALGURI	1510	342	23%	104343	29212	26017	89.06%
Total		51890	13583	26%	4138893	1167018	936953	80.29%

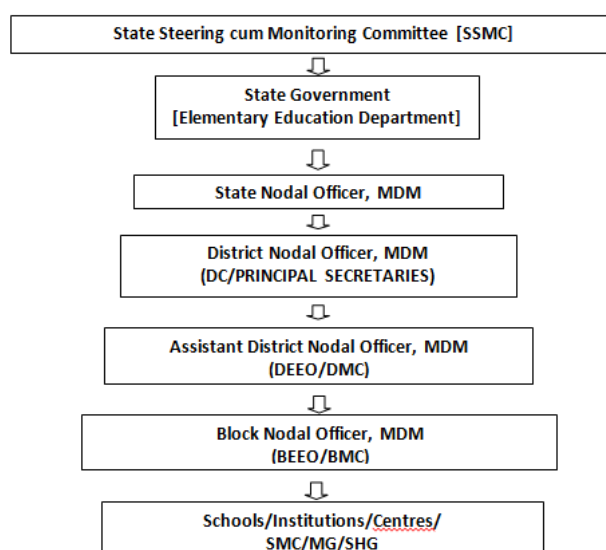
Only 26% schools have reported data on 9th May, 2018.

4. Release of funds

The Govt. of India released ad-hoc grant on 03/05/2017, balance of first installment on 05/07/2017 and 2nd installment on 07/12/2017 and 03/01/2018. As per the information provided by the State, ad-hoc grant was received at school levels in the month of June, 2017. As far as balance of 1st installment is concerned, same was received at school level in September, 2017. 2nd installment was received at school level in January and March, 2018.

During 2017-18, cooking cost has been released to the SMC's bank accounts directly through RTGS from State Nodal Office. Monthly honourarium of Cook cum Helpers has been released directly to their individual bank accounts through RTGS from State Nodal Office. Fund for cost of food grains (rice) and transportation cost has been released directly to the bank accounts of District Nodal Office, MDM through RTGS from State Nodal Office. District Nodal Office has been released the fund for cost of food grains and transportation cost to the FCI authority & GPSS through RTGS. Fund for kitchen devices has been released to the SMC's bank accounts directly through RTGS from State Nodal Office.

5. Management Structure



The State Government decided to implement MDMS through Sarva Siksha Abhiyan, Assam with dedicated MDMS cells and experienced as well as qualified staff. Accordingly, officers/ staff have been engaged to look after day to day activities of Mid-Day Meal scheme. The pool of manpower has already been engaged for management, monitoring and maintaining and updating of all records related to MDMS. All staff/functionaries of the cells have already been trained about the roles and responsibilities of the officials and also provided with furniture and computers/laptop to perform the job in prompt manner.

6. System for payment of cost of foodgrains to FCI

Presently, payment of cost of food grains to FCI is made through the concerned DNOs. In this regard, State releases fund to DNOs subject to the lifting status submitted by FCI to the State Nodal Office and accordingly, DNOs make payment as per the bills raised by FCI subject to verification of the bills by Officials of Food and Civil Supply Department.

7. Menu

The SMCs have been requested to follow Weekly Menu suggested by the implementing Department. The Weekly Menu is printed in MDM IEC calendar which provided to all schools covered under Mid-Day Meal Schemes. The weekly menu is given below:

Weekly Menu (Suggested)	
Monday	Rice, Dal, Leafy Veg.
Tuesday	Khisidi/ Soya, Leafy Veg.
Wednesday	Rice, Egg, Curry/ Local option
Thursday	Rice, Dal, Mix Veg
Friday	Rice, Dal, Leafy veg
Saturday	Khisidi/ Pulao/Local option

8. Community involvement

In the State, community plays a pivotal role for smooth implementation of MDMS. Contribution of communities as far as monitoring of the scheme, developing kitchen garden, ensuring had-wash facilities, providing local vegetables are quite tangible. State has already implemented the programme called “Sampriti Bhojan” to encourage communities in the schools to benefit the children throughout the State for providing supplementary nutritive items/ foods like sweet, fruits, snaked and biscuits etc. to the children of the schools in addition to Mid-Day Meal being provided to the school going children, with voluntary support from the community for creating large scale community participation in the affairs of schools and also for generating feelings of social harmony, equity and brotherhood amongst school children. “Sampriti Bhojan” programme is a voluntary initiative of the local parents/ guardians / community to provide such nutritious food to the school going children as a part of their observance of birthdays, anniversaries, child birth, success in examinations, marriage party and family function or during festivals in the community or observance of any important day etc.

9. Capacity Building

A 5-day training programme for cook-cum-helper was organized in 2 batches having 30 Cook-cum-Helpers in each batch in the Institute of Hotel Management, Guwahati. The expenditure of the training of Cook-cum-Helper was incurred from MME head. These 60 trained Cook-cum-Helpers along with previous year trained 150 Cook-cum-Helpers were the Master Trainers and imparted training to other Cook-cum-Helpers at cluster level.

In the training of SMCs under SSA, the Mid-Day-Meal has been taken a major subject of discussion with the SMC members. Apart from SMC's role and responsibilities in MDMS, the subjects like books of accounts, hygiene and safe drinking water, emergency plan, kitchen garden etc. were covered in the training module.

Role of SSA functionaries in MDMS is also discussed in different meetings held at State & District levels from time to time.

10. Tasting of Meal

Cooked food is tasted by teachers / cook-cum-helper / SMC members on regular basis. The Schools authority has also been requested to maintain tasting register at school level.

11. Grievance Redressal Mechanism

A Toll Free Contact Centre is setup at State Mission Office for SSA & MDMS with the number 18003453525, through which 25 complaints / grievances with respect to MDMS have been received till 31st March, 2018. Complaints are referred to the concerned district officials to enquire into the matter with competent authority and take necessary action as deemed appropriate. Accordingly, all complaints have been redressed.

12. Contingency Plan to avoid any untoward incident

The District Nodal Officers, MDMS cum Deputy Commissioners/Principal Secretaries (Autonomous Council) were instructed by the Govt vide letter no. PMA/MDM-Cell/62/2011/36, dtd. 25th July,2013 to ensure having of a contingency plan at School, Block, Sub-Division and at the District Level to face any sort of incident that may possibly occur in connection with MDM scheme. The contact numbers of important functionaries are to be displayed in visible place preferably Wall in the schools to use at urgent/emergency moment.

i. Contingency Plan for district:

The important phone numbers of Deputy Commissioner, Additional Deputy Commissioner, District Civil Hospital, Ambulance service, DEEO, DMC are to be reflected on the wall of DEEO/ DMC office and Inspector of Schools office.

ii. Contingency Plan for Block:

The important phone numbers of Deputy Commissioner, Additional Deputy Commissioner, District Civil Hospital, Ambulance service, DEEO, DMC, BEEO, BMC, Public Health Centre are to be reflected on the wall of BEEO/ BMC office.

iii. Contingency Plan for Schools:

The important phone numbers of Deputy Commissioner, Additional Deputy Commissioner, District Civil Hospital, Ambulance service, DEEO, DMC, BEEO, BMC, Public Health Centre, Headmaster of the school, SMC President are to be reflected on the wall of School. Schools should keep First-aid-Box with adequate medicines, bandage, detol, cotton etc.

Also the following steps are to be taken by District authority / school authority.

- ✓ If cooked food is found contaminated that may be buried under ground.
- ✓ Unusable rice may be destroyed in presence district administration.
- ✓ Always use agmarked oil, turmeric etc in cooking food.
- ✓ Cooked food must be tested by the teacher/ SMC member before 30 minutes ahead of distribution among the children.
- ✓ Fast aid training to be arranged for teacher & SMC members.
- ✓ Fire extinguisher shall be installed in the school.

In this regard, advisory from the Government will be issued to District Administration, district and block officials of Education Department and School authority for strict compliance.

13. Social Audit

State has been conducted Social Audit for SSA & MDMS with a view to ensure transparency, accountability & participation of community in school development activities. Social Audit manual was developed in the State with the inputs of Resource Person, Teachers, SMCs and provided to the selected SMCs for conducting Social Audit. Social Audit teams are constituted with the representative of PRIs, local Retired Teacher, NGOs, local educated Youth, Mothers Group and the Group Co-ordinators has been given training at district level. During the financial year 2017-18, a total of 47,818 schools have been covered under social audit in convergence with SSA. In 2018-19, a total of 47,753 Schools is proposed to be covered under social audit in convergence with SSA.

--oOo--

Part-C : Recommendations of Appraisal Team for 2018-19

S. No.	Component	PAB Approval 2017-18	Proposal for 2018-19	Recommendations by appraisal team
1	Institutions			
1.1	Primary	44942	43464	43464
1.2	Upper Primary	13749	13776	13776
2	Children			
2.1	Primary	2899029	2718434	2718434
2.2	Upper Primary	1349967	1332485	1332485
2.3	NCLP	7175	2654	2654
3	Working Days			
3.1	Primary	210	210	210
3.2	Upper Primary	220	220	220
3.3	NCLP	312	312	312
4	Cook cum Helpers*			
4.1	Primary	122724	118998	118998
4.2	Upper Primary			
5	Non Recurring			
6.1	Kitchen cum Store	Nil	Nil	Nil
6.2	Kitchen Devices	Nil	Nil	Nil
6.3	Kitchen Devices (Replacement)	Nil	Nil	Nil

State: Assam

QUANTIFICATION OF CENTRAL ASSISTANCE FOR 2018-19

A. Food grains

Sl. No.	Stage	No. of Children	No. of Working days	Quantity in MTs.
1	Primary (@ 100 gms per child per school day)	2718434	210	57087.11
2	Up. Primary (@150 gms per child per school day)	1332485	220	43972.01
3	NCLP (@150 gms per child per school day)	2654	312	124.21
4	Drought			
4.1	Primary			
4.2	Upper Primary			
TOTAL		4053573		101183.33

B. Cost of Foodgrains, Cooking cost, Transport Assistance, Hon. to cook-cum-helpers and Management Monitoring and Evaluation (MME)

Sl. No.	Component/norm	Amount admissible (Rs. in lakh)
1	2	3
Primary		
1	Cost of Food grains @ Rs. 3000/- per MT for 57087.11MT rice	1712.61
2	Unit Cooking Cost- Rs. 4.13 per day / per child for 2718434 children for 210 days	
2.1	Central Share @ Rs. 3.72 per child/day	21236.41
2.2	Minimum Mandatory State Share @ 0.41 per day/per	2340.57
3	Transportation Cost @ Rs. 1360.00 Per MT food grains (2718434x 210 days x 0.0001 MT x Rs.1360.00)	776.38
4	Honorarium for cook cum Helper (Primary and Upper Primary)	
4.1	Central Share - (118998 x Rs.900x 10 months)	10709.82
4.2	Minimum Mandatory State Share - (118998 x Rs. 100 x 10 months)	1189.98
5	Management Monitoring and Evaluation (MME) @ 1.8% of the i) Cost of food grains ii) Cooking cost iii) Cost of transportation and iv) Honorarium to cook – cum-helpers	619.83
TOTAL - {1+2.1 +3+4.1+5}		35055.06
Upper Primary		

6	Cost of Foodgrains @Rs. 3000/- per MT for 43972.01 MT rice	1319.16
7	Unit Cooking Cost 6.18 per day / per child for 1332485 children for 220 days	
7.1	Central share @ Rs.5.56 per child/day	16298.96
7.2	Minimum Mandatory State Share @ Rs.0.62 per child/day	1817.51
8	Transportation cost @ Rs. 1360.00 Per MT food grains (1332485 x 220 days x 0.00015 x 1360)	598.02
9	Honorarium to cook cum Helper (Included in Primary)	
10	Management Monitoring and Evaluation (MME) @ 1.8% of the 1) Cost of food grains 2) Cooking cost 3) Cost of transportation and 4) Honorarium to cook – cum-helpers	327.89
	TOTAL - {6+7.1 +8+9.1+10}	18544.03
NCLP		
11	Cost of Foodgrains @Rs. 3000/- per MT for 124.21 MT rice	3.73
12	Unit Cooking Cost 6.18 per day / per child for 2654 children for 312 days	
12.1	Central share @ Rs.5.56 per child/day	46.04
12.2	Minimum Mandatory State Share @ Rs.0.62 per child/day	5.13
13	Transportation cost @ Rs. 1360.00 Per MT food grains (2654 x 312 days x 0.00015 x 1360)	1.69
14	Management Monitoring and Evaluation (MME) @ 1.8% of the 1) Cost of food grains 2) Cooking cost 3) Cost of transportation	0.93
	TOTAL - {11+12.1+13+14}	52.38
Grand Total (Primary + Upper Primary + NCLP)		53651.47

C. Drought : NIL

D. Non-recurring : NIL

E. Total Requirement of Funds for 2018-19 (Rs. in lakh)

Component		As per existing norms	
		Centre	Minimum mandatory State share
Recurring	Normal	53651.47	5353.20
	Drought	0	0
Non- recurring		0	0
Total		53651.47	5353.20